



Building Sustainable Communities in the Arctic: the Resources and Sustainability in the Arctic Project

**Presentation
Yukon College, Whitehorse, May 16, 2012**

**Chris Southcott
Lakehead University/ Yukon College**

ReSDA?



- Largest social science research project ever proposed for the Circumpolar North currently involves 51 researchers at 29 universities in 9 countries
- The main focus of ReSDA's research will be on finding ways to ensure that a larger share of the benefits of resource development stay in the region with fewer costs to communities.
- The Network will mobilize researchers around the questions of finding out how to maximize benefits of resource development to northern regions and communities and minimize the social, economic, cultural, and environmental costs.
- The primary objective of the research will be to cultivate innovative approaches to the best ways of using natural resources to improve the well-being of northern communities while preserving the region's unique ecosystem.

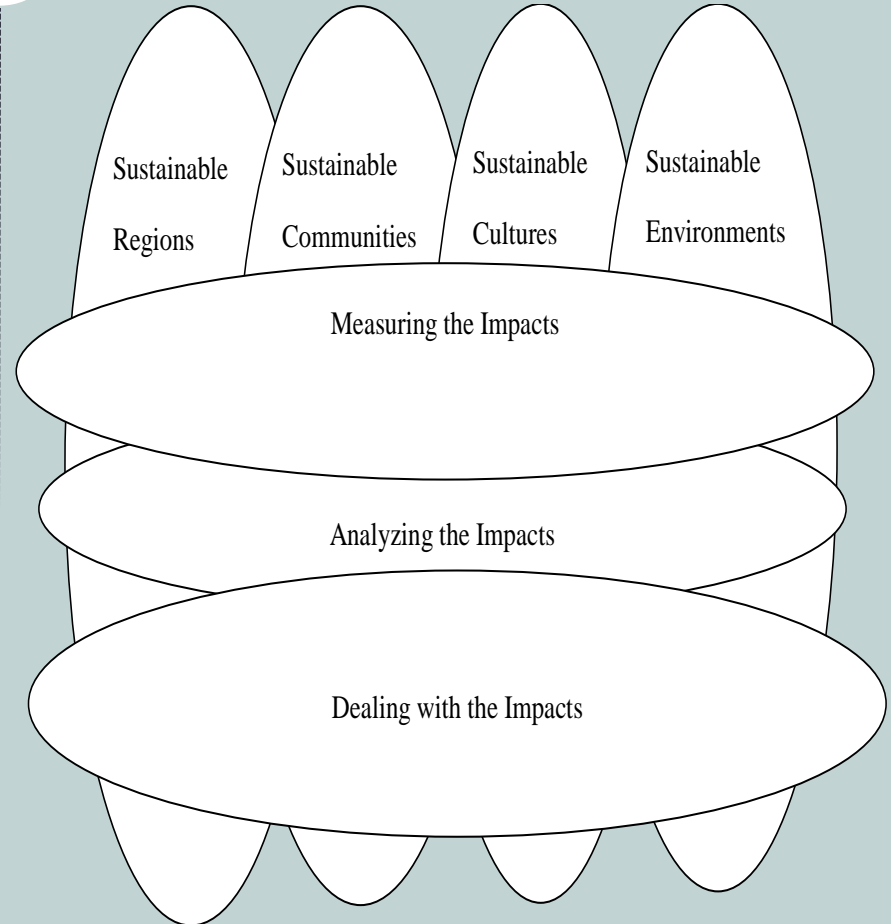
Where does this proposal come from?



- Social Economy Research Network for Northern Canada (SERNNNoCa) and its community partners (Northern Research Institute in Yukon, Aurora Research Institute in NWT, Nunavut Research Institute in Iqaluit, Makivik, Arctic Co-ops)
- Community workshops conducted by SERNNNoCa in Northern communities
- A similar Network of Centres of Excellence proposal developed in 2009
- International workshops organized by the University of the Arctic and UNESCO

The Current Structure of ReSDA

- Based on four themes: sustainable regions, sustainable communities, sustainable cultures, and sustainable environments
- And 3 types of research questions: measuring the impacts, analyzing the impacts, and dealing with the impacts

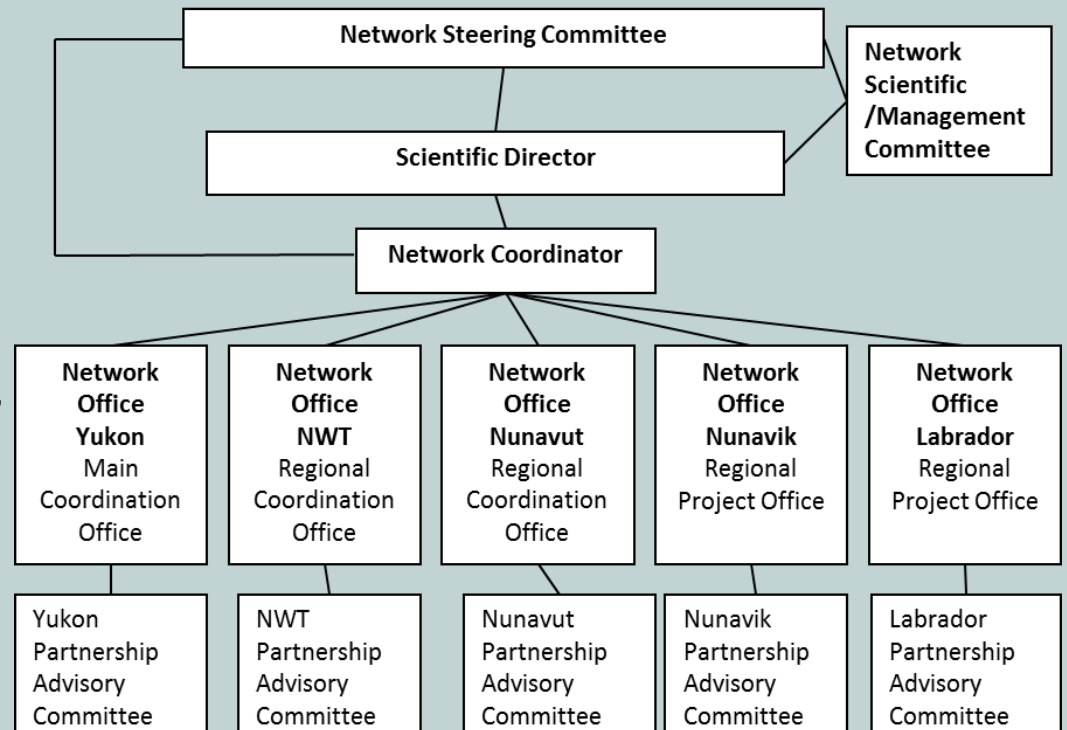


The Structure of ReSDA

Members of the Steering Committee:

4 theme coordinators, with partner institutions including:

- Yukon Research Centre,
- Aurora Research Institute,
- Nunavut Research Institute,
- Makivik Inc.,
- the Labrador Institute,
- Arctic Co-ops, and
- an international representative



Initial Project: What are the main themes that require a gap analysis



- 2011 Workshop in Yellowknife tried to isolate the major research questions that will allow ReSDA to address the main question: how can natural resources be used to ensure more benefits to Arctic communities



Themes for Gap Analysis



Part 1 – Setting the Stage

1. History of Resource Development across the Arctic – What work has been done?
2. The Impacts of Resource Development on Northern Communities What work has been done?
3. Measuring the Impacts

Part 2 - The State, Communities and Resources : State driven conditions governing research development benefits

4. Resource Revenue Regimes (federal, territorial, Indigenous shares -how the system works for each resource and implications for self-government and northern governments generally) How resource revenues are shared with communities across the Arctic
5. Social and economic impact assessment: past and future
6. Regional economic development: approaches and analyses

Themes for Gap Analysis



Part 3 - Communities, Resources and the State: Community driven conditions governing resource development benefits

7. Social dimensions of economic development: what is needed for community well-being.
8. Comparative experience with localized negotiations between communities and companies, comparing experience in a selected group of countries. Companies and Northern Communities
9. Canadian experience with localized negotiations between communities and companies, for example, Impact Benefit Agreements.

Part 4 - Indigenous cultures and resource development benefits

10. The social and economic implications of the comprehensive land claim system in comparative perspective Land claims and increased resource benefits to communities.
11. Community or traditional knowledge and economic decision-making

Themes for Gap Analysis



Part 5 - Resources, Communities, and the Environment

12. Conservation and Use of Resources - Synergies and Conflicts (i.e. land use conflicts over harvesting, animal population crises)
13. Climate change and its implications for community, regional and northern development
14. Regulatory Regimes

<http://dl1.yukoncollege.yk.ca/ReSDA>

Yukon Government Research Ideas (draft from CHARS meeting) & ReSDA



Theme: Resource Development

Research Priority: Improved baseline data (especially for Environmental Assessment) and infrastructure for resource development

Sector: Mining

Improved baseline data -- especially for Environmental Assessment

Key Issues from a Regulatory/Industry Perspective

- 1 Understanding and modeling impacts of projects on water resources
- 2 Mineral exploration
- 3 Standardized data collection protocols
- 4 Understanding and managing cumulative effects
- 5 Demographic shifts
- 6 Reference sites
- 7 Traditional Knowledge/Scientific Data convergence
- 8 Landscape Classification system and ecosystem map products

9 Broad Ecosystem Health Indicators

Infrastructure for resource development

Key Issues from a Regulatory/Industry Perspective

- 7 Reclamation, closure and rehabilitation
- 8 Adapting to climate change
- 9 Energy for mines
- 10 Transportation and Linear Corridors