



Photo credit Amanda Graham

### Our Partners

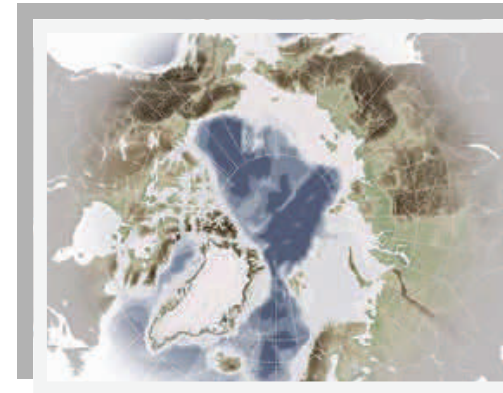
- ArcticNet
- University of the Arctic
- The Labrador Institute
- Dept. of Labrador & Aboriginal Affairs
- Makivik Corporation
- Nunavut Research Institute, Nunavut Arctic College
- Nunavut Tunngavik Inc.
- Government of Nunavut
- Aurora Research Institute, Aurora College
- Inuvialuit Regional Corporation
- Government of Northwest Territories
- Yukon Research Centre/Yukon College
- Yukon Government
- Canadian Northern Economic Development Agency
- Aboriginal Affairs & Northern Development Canada
- Arctic Cooperatives
- Conference Board of Canada

### Research Team—Co-investigators

Aarsaether, Nils	University of Tromso, Norway
Adamowicz, Wiktor	University of Alberta
Beaulieu, Michel	Lakehead University
Berger, Paul	Lakehead University
Berman, Matt	University of Alaska Anchorage
Bradshaw, Ben	University of Guelph
Caine, Ken	University of Alberta
Coates, Ken	University of Waterloo
Cameron, Emilie	University of British Columbia
Chatwood, Susan	University of Toronto
Dowsley, Martha	Lakehead University
Espiritu, Aileen	Barents Institute, Norway
Fondahl, Gail	University of Northern BC
Ford, James	McGill University
Furgal, Chris	Trent University
Gibson, Virginia	University of British Columbia
Harpelle, Ron	Lakehead University
Heininen, Lassi	University of Lapland, Finland
Heleniak, Tim	University of Maryland
Hesseln, Hayley	University of Saskatchewan
Huskey, Lee	University of Alaska Anchorage
Keeling, Arn	Memorial University
Lauckenbauer, Whitney	University of Waterloo
Lemelin, Harvey	Lakehead University
Loukacheva, Natalia	University of Toronto
Mills, Suzanne	McMaster University
Martin, Stephanie	University of Alaska Anchorage
Martin, Thibault	Université de Québec en Outaouais
Noble, Bram	University of Saskatchewan
Nuttall, Mark	University of Alberta
Nyman Larsen, Joan	University of Akureyri, Iceland
Petrov, Andrey	Univ. of Northern Iowa
Poppel, Birger	University of Greenland
Riabova, Larisa	Kola Science Centre, Russia
Rodon, Theiry	Université Laval
Sandlos, John	Memorial University
Schott, Stephan	Carleton University
Schweitzer, Peter	University of Alaska Fairbanks
Simmons, Deborah	University of Manitoba
Smith, Peggy	Lakehead University
Stammler, Florian	University of Lapland, Finland
Westerlund, Olli	Umea University, Sweden
Wilson, Gary	UNBC
Winther, Gorm	University of Aarhus, Denmark
Young, T Kue	University of Toronto

*“ The potential exists for finding new ways of developing resources that will ensure greater benefits for and build capacity in these northern communities. Rather than being something that threatens their vitality, the development of natural resources can be done in a way that will ensure the long-term sustainability of northern communities and the surrounding environment.”*

- Chris Southcott, Principal Investigator



**Chris Southcott**  
Principal Investigator  
Lakehead University  
Department of Sociology  
Thunder Bay, ON P7B 5E1  
Email: csouthco@lakeheadu.ca

**Valoree Walker**  
Program Coordinator  
Yukon Research Centre, Yukon College  
Box 2799, Whitehorse, YT Y1A 5K4  
Phone: 867-668-8857  
Email: sernnoca@yukoncollege.yk.ca



A Research Network to examine ways to maximize the benefits from resource developments for Northern communities



Photo credit Amanda Graham

**A Major Collaborative Research Initiative Project**

Lakehead  
UNIVERSITY



Social Sciences and Humanities  
Research Council of Canada

Conseil de recherches en  
sciences humaines du Canada



# Finding ways to ensure that a larger share of the benefits of resource development stay in the North with fewer costs to communities

## Background

ReSDA is a new research network involving researchers from a range of disciplines and organizations representing communities, government, the private sector, and non-profit organizations. The network aims to conduct and mobilize research to support and enhance sustainable development of Arctic natural resources in ways that improve the health and well-being of northern communities while preserving the unique environments and cultures.



Photo credit Tobi Jeans

Research projects are organized into four main themes with research carried out in partnership with local communities across the Circumpolar North. Projects involve measuring, analyzing and managing the impacts and benefits of resource development, with examples from a range of resource sectors.



## **Sustainable Regions**

**Coordinator—Frances Abele, Carleton University**

Focus on policy related research to find ways to ensure that the regions of the North have the appropriate tools to mitigate negative impacts of resource development and provide greater benefits to northern communities.

## **Sustainable Communities**

**Coordinator—Chris Southcott (Principal Investigator), Lakehead University**

Research will examine new ways of developing the natural resources of the Arctic so that communities can effectively deal with resulting changes and challenges. The impacts will be examined at the community level.

## **Sustainable Cultures**

**Coordinator—David Natcher, University of Saskatchewan**

This theme looks at how resource development can occur in a manner that supports the cultural foundations of the Indigenous peoples of the North and enhances their involvement in economic and social areas.

## **Sustainable Environments**

**Coordinator—Brenda Parlee, University of Alberta**

Research will examine five areas

- Knowledge of ecosystem variability and change
- Sustainable resource technologies
- Social networks and institutions
- Economic opportunities
- Governance of competing land uses

For more information visit our website:

<http://dl1.yukoncollege.yk.ca/resda/>

## Operations

ReSDA receives core funding from the Social Sciences and Humanities Research Council of Canada under its Major Collaborative Research Initiative Program. Starting in 2011, ReSDA will receive \$2.5 million in funding over the course of seven years. The project also receives funding from other sources and partners such as the Canada Foundation for Innovation (CFI). The program will fund a series of projects around the four themes in partnership with communities. While research will initially concentrate on the Canadian North, projects will also be organized in the Circumpolar North.



Photo credit - Valoree Walker